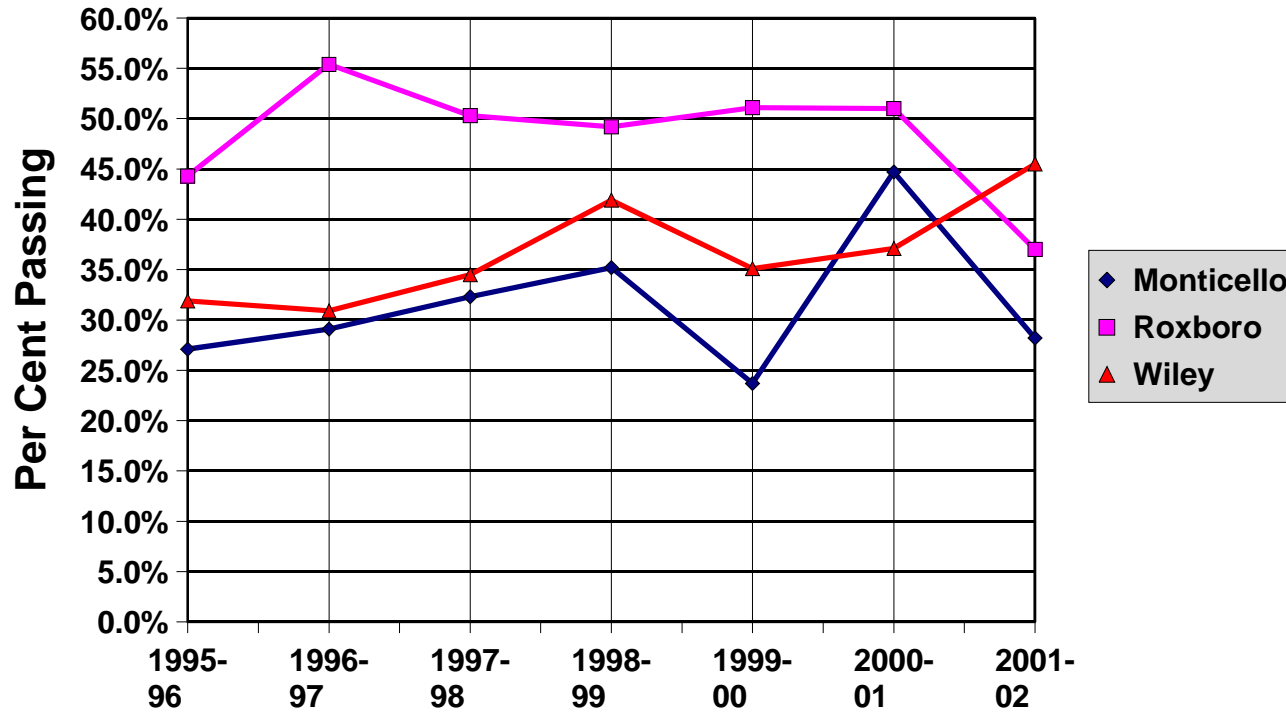


### 6th Grade Math



	1995-96	1996-97	1997-98	1998-99	1999-00	2000-01	2001-02
Monticello	27.1%	29.1%	32.3%	35.2%	23.7%	44.7%	28.2%
Roxboro	44.3%	55.4%	50.3%	49.2%	51.1%	51.0%	37.0%
Wiley	31.9%	30.9%	34.5%	41.9%	35.1%	37.1%	45.5%